



Overview

PT55WH05 is Canyon's 55 shore D durometer, white Virgin PTFE with multiple food, water, and medical grade specifications. PT55WH05 is 100% PTFE and offers extreme chemical resistance, high & low temperature performance, and good dynamic resilience.

Features & Benefits

- Best chemical resistance
- FDA compliant per 21 CFR 177.1550
- USP Class VI
- NSF 61, KTW, WRAS
- EC 1935/2004, 1895/05, EU 10/11, 2023/06
- Low gas permeability
- Self lubricating

Recommended Applications

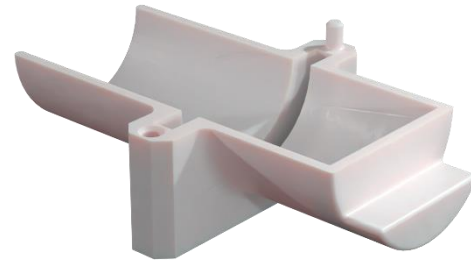
- Backup rings
- Spring energized seals
- Semiconductor
- Chemical Processing
- Solvents, MEK, DMF, Acetone

Service Temperature

- -200°C to 260°C (-328°F to 500F)

Specification

- 100% Virgin PTFE



Test Data

Table 1. Physical Properties

| | |
|--|-----------------------|
| Color | White |
| Hardness, Shore D [D2240] | 55 |
| Tensile Strength, psi (MPa) [D1708] | 3335 (23) |
| Elongation [D1708] | 230% |
| Specific Gravity, g/cm ³ [D792] | 2.15 |
| Water Absorption - 24hrs, % [D570] | 0 |
| Linear Coefficient of Thermal Expansion, 1/°C [ASTM 696] | 13 x 10 ⁻⁵ |

Table 2. Coefficient of Friction

| | |
|-----------------|------|
| Static [D1894] | 0.07 |
| Dynamic [D1894] | 0.05 |

Table 3. Deformation

| | |
|----------------------------------|----|
| Deformation Under Load, % [D621] | 13 |
| Permanent Deformation, % [D621] | 7 |

Table 4. Electrical Properties

| | |
|------------------------------------|------------------|
| Volume Resistivity, Ohm*cm [D257] | 10 ¹⁷ |
| Surface Resistivity, Ohm*cm [D257] | 10 ¹⁶ |
| Dielectric Strength, kV/mm [D149] | 30 |