



## Overview

PT60WH10 is Canyon's 25% Glass Filled, 60 shore D durometer, white PTFE. PT60WH10 offers extreme chemical resistance, high & low temperature performance, reduced dynamic friction, and improved wear resistance.

## Features & Benefits

- 25% Glass Fiber Filled for improved dynamic performance
- Excellent heat resistance & high temp stability
- Best chemical resistance
- Low gas permeability
- Self lubricating

## Recommended Applications

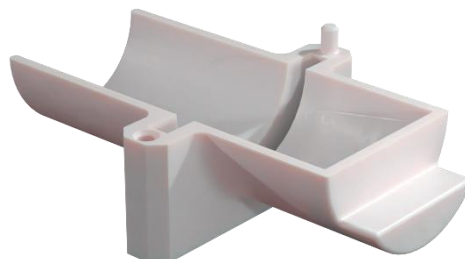
- High Pressure Backup rings
- Dynamic Spring energized seals
- Semiconductor
- Chemical Processing
- Solvents, MEK, DMF, Acetone

## Service Temperature

- -268°C to 260°C (-450°F to 500°F)
- Excursions up to 288°C (550°F)

## Specification

- 25% Glass Fiber Filled PTFE



## Test Data

Table 1. Physical Properties

Color	White
Hardness, Shore D [D2240]	60
Tensile Strength, psi (MPa) [D4745]	2700 (18.6)
Elongation [D4745]	250%
Specific Gravity, g/cm <sup>3</sup> [D792]	2.22
Water Absorption - 24hrs, % [D570]	0
Linear Coefficient of Thermal Expansion, 1/°C (1/°F) [E831]	9.9 x 10 <sup>-5</sup> (5.5 x 10 <sup>-5</sup> )

Table 2. Coefficient of Friction

33.3 psi, Dynamic 150 fpm	0.02
---------------------------	------

Table 3. Rotary Motion

Typical PV K Factor, psi*ft/min	10,000
---------------------------------	--------

Table 4. Deformation

73°F, 1500 psi, 24hr, % [D621-59]	1.73
100°F, 1500 psi, 24hr, % [D621-59]	1.91
200°F, 1500 psi, 24hr, % [D621-59]	4.75

Table 5. Electrical Properties

1000 cps Dielectric Constant [D150-59T]	2.4
Dielectric Strength in Air, V/mil. [D257-61]	250